

ASX Announcement  
17 September 2010

## **GBM Resources to commence Drilling on Brightlands Copper Gold Project, North-West Queensland**

Australian resources company GBM Resources Limited (ASX:GBZ) ("GBM" or "the Company") will commence its drilling program tomorrow on the Brightlands Copper Gold Project in North-West Queensland.

The drilling program is scheduled to run to November 2010 and will target the Milo Prospect, T2 on the Tiger Prospect and under the open pit on the Magpie Mining Lease.

Program Overview :

➤ **Milo Prospect**

Initial drilling at Milo Prospect has returned significant polymetallic intersections containing copper, gold, uranium, cobalt and molybdenum. Drilling has confirmed that this is an IOCG system with significant size potential. Interpretation of results to date is that it is a halo enveloping a large mineralising system. Three 500m deep diamond holes are planned to target this system.

➤ **Tiger T2 Prospect**

Soil sampling over the T2 target has defined large areas of anomalous copper with highest values coincident with the significant T2 SAM conductivity anomaly. A series of shallow (to 100m) RC holes are planned to identify the coincident SAM conductivity and high order copper anomalism in soils.

➤ **Magpie Mining Lease**

Magpie Mining Lease provides a strategic holding for GBM as it lies on the southeast continuation of the geological trend hosting the Rocklands Cu-Co deposit and consolidates the Company's exploration activities in the Tiger Prospect area.

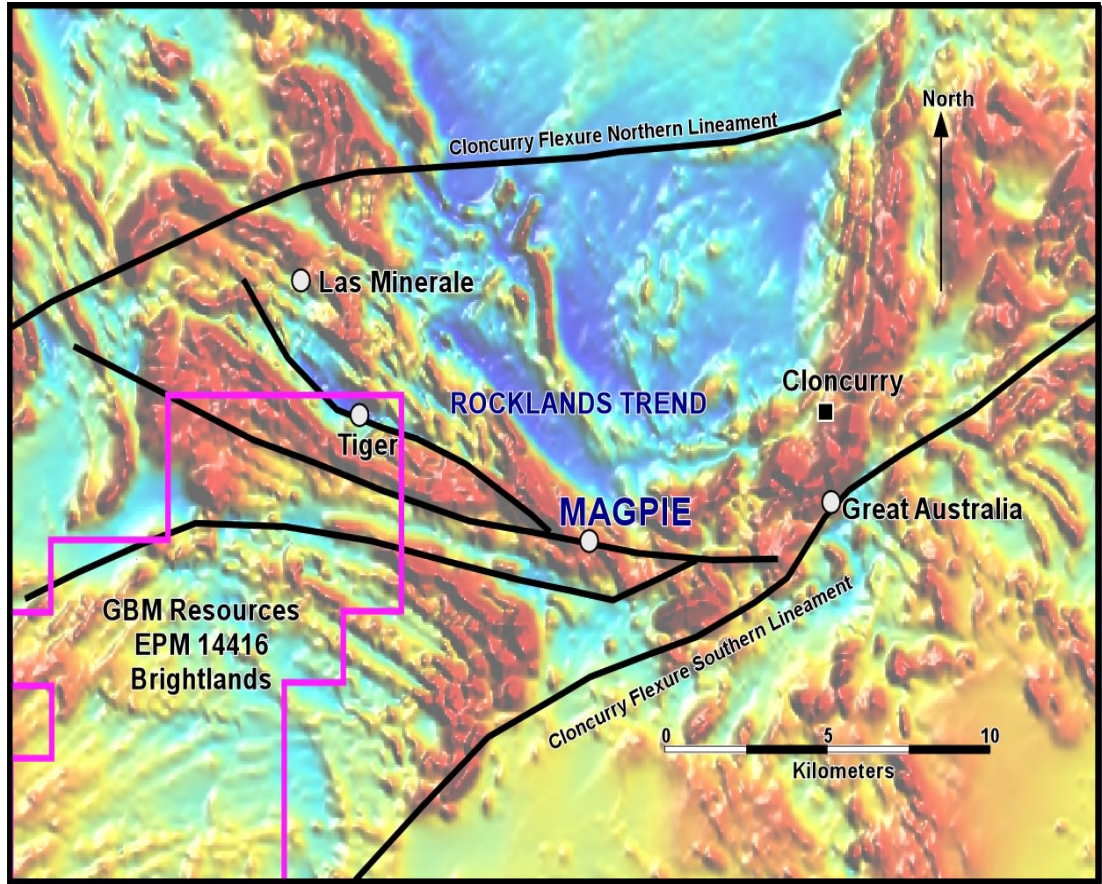
Historically the Magpie mining lease was shallow pit mined for high grade copper and shipped to Mt Isa by road for processing in the 1980's. The mining lease has high potential as an oxide copper deposit. Initially, it is planned to drill three 150m RC holes under the shallow pit area.

The Milo and Tiger Prospects and Magpie Mining Lease are located on the regionally significant structural trend, the 'Cloncurry Flexure' in the Eastern Succession of the Mt Isa Inlier. Metamorphic rocks of the Eastern Succession host the world-class Ernest Henry IOCG Deposit and recent exploration in the area has resulted in new significant discoveries of IOCG-style mineralization.

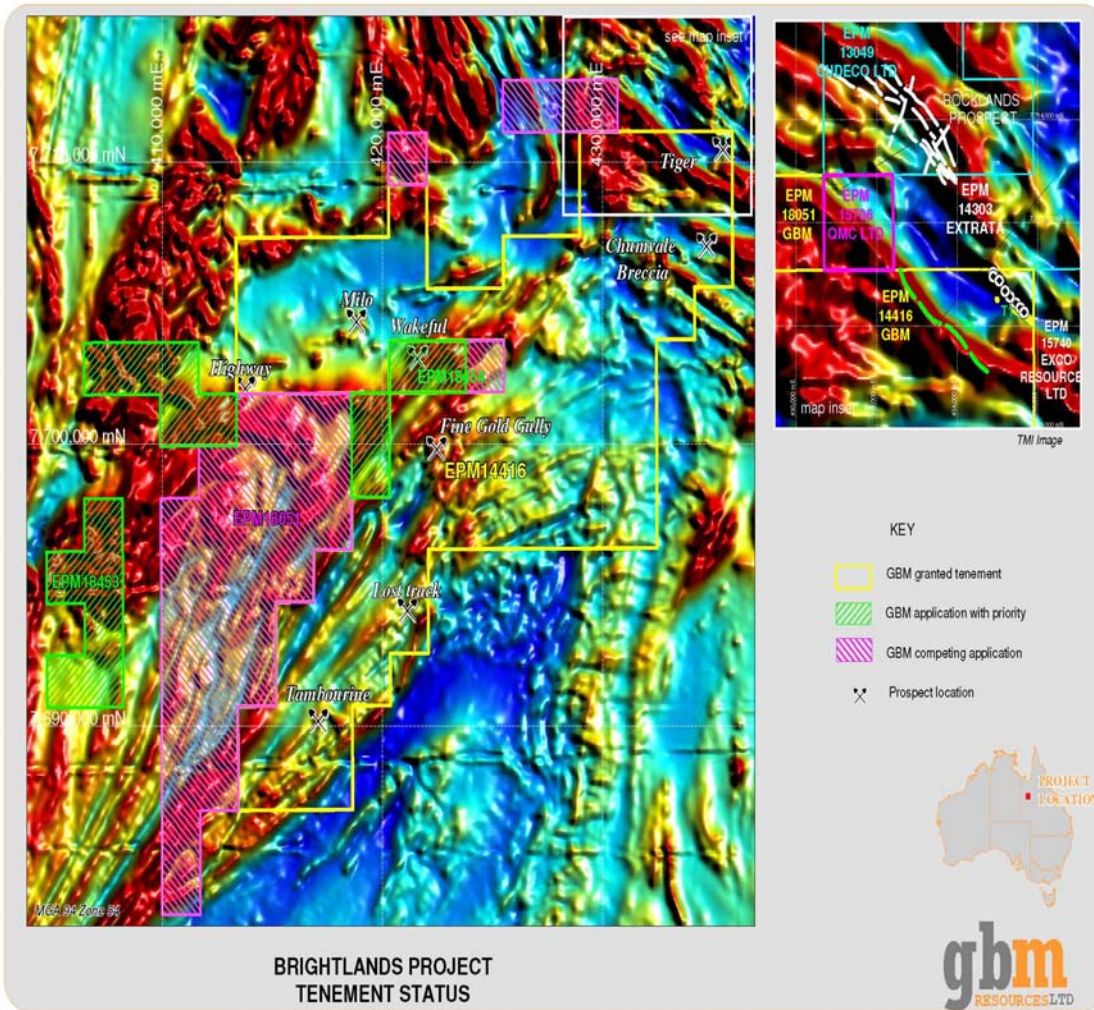
**For Further information please contact:**

Peter Thompson  
Managing Director  
GBM Resources Limited  
Tel: 08 9316 9100

Karen Oswald  
Professional Public Relations  
Tel: 0423 602 353  
E: [Karen.oswald@ppr.com.au](mailto:Karen.oswald@ppr.com.au)



Location map showing Magpie mining lease and proximity to Tiger prospect – Brightlands Cu Au Project



The information in this report that relates to Exploration Results and Mineral Resources is based on information compiled by Neil Norris, who is a Member of The Australasian Institute of Mining and Metallurgy. Mr Norris is a full-time employee of the company. Mr. Norris has sufficient experience which is relevant to the style of mineralisation and type of deposit under consideration and to the activity which he is undertaking to qualify as a Competent Person as defined in the 2004 Edition of the 'Australasian Code for Reporting of Exploration Results, Mineral Resources and Ore Reserves'. Mr. Norris consents to the inclusion in the report of the matters based on his information in the form and context in which it appears.